



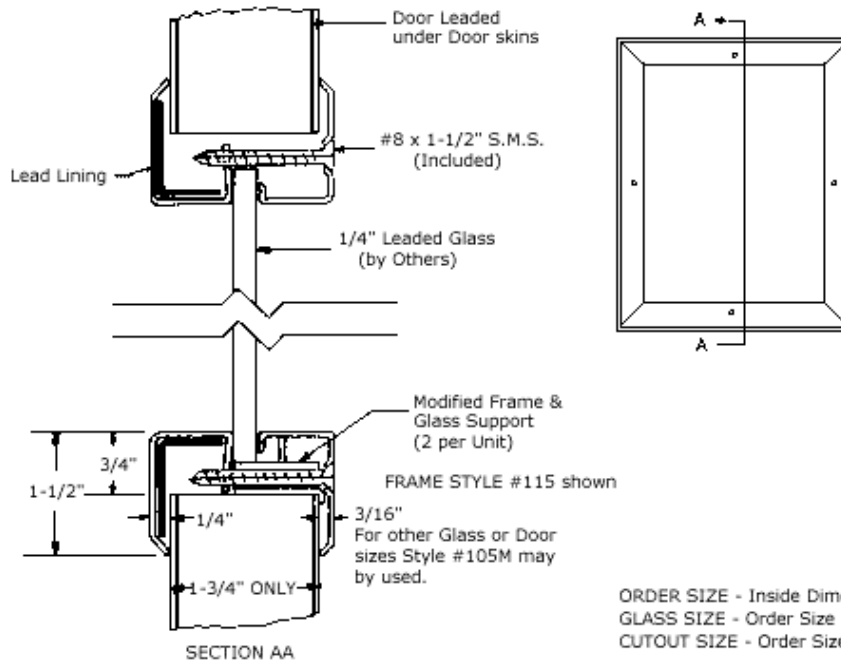
LEAD LINED DOOR NOTES

1. The maximum lite size allowed on 20-minute lead lined doors is 256 square inches (maximum 16" wide x 16" high).
2. Lead lined doors require lead lined vision panels. (Wood stops are not allowed).
3. The maximum fire rating for a lead lined door is 20-minute.
4. Maximum door size for single doors is 4-0 x 8-0 and for pairs is 8-0 x 8-0.
5. Lead lined doors have a sheet of lead on either side of the core.

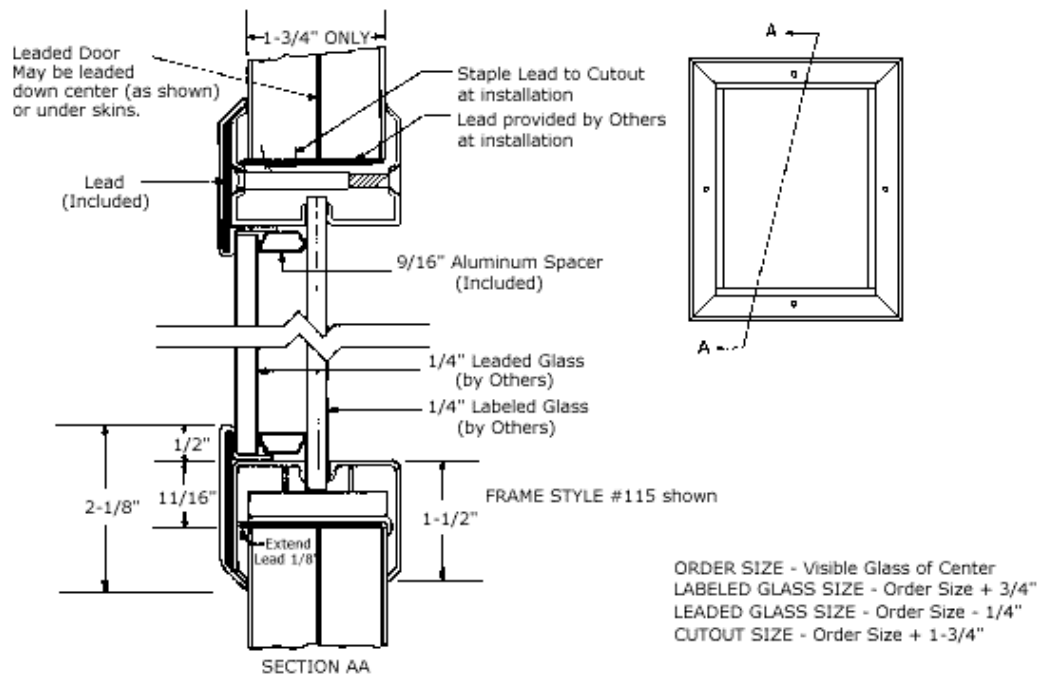
2 sheets @	1/32"	=	1/16"	or	4 lbs.
2 sheets @	1/16"	=	1/8"	or	8 lbs.
2 sheets @	1/8"	=	1/4"	or	16 lbs.
6. Lead lined pairs of doors must always have a lead lined astragal. (Wood not allowed).
7. A lead lined door cannot be made with stave lumber core.

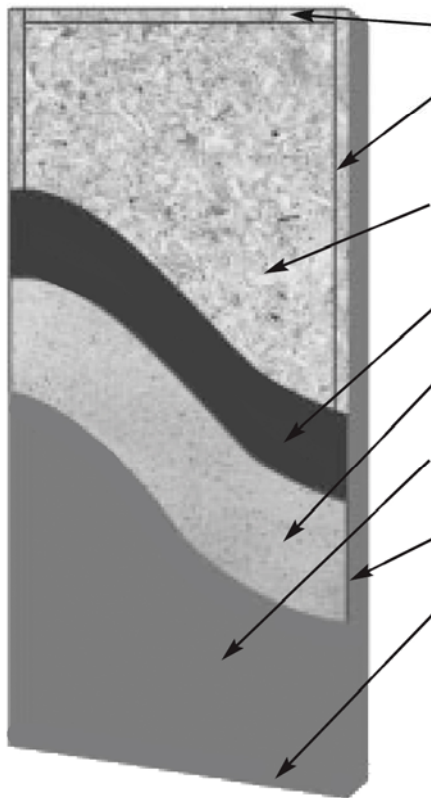
LEAD LINED FRAMES

Lead Lined Frame "LL2F" – for Non-rated



Lead Lined Frame "LL" – for 20-Minute Fire Rating

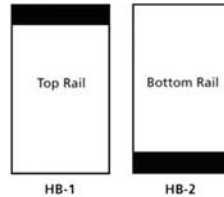




- **TOP RAIL:**
3-3/8" Structural Composite Lumber (SCL)
- **VERTICAL STILES:**
1-3/8" Structural Composite Lumber (SCL) with matching laminate edge
Crossbands concealed at edge
- **CORE:**
Particleboard, ANSI A208.1, grade 1-LD-2, 28-32#/cu. ft. with continuous lead glued to each side of framed core
- **LEAD SHEETS:**
1/16" to 1/4" thick
- **CROSSBANDS:**
High Density Fiber (HDF)
- **LAMINATE FACES:**
Vertical grade - standard (VGS)
- **FINISHED THICKNESS:**
1-3/4" (± 1/16")
- **BOTTOM RAIL:**
3-3/8" Structural Composite Lumber (SCL)

All dimensions shown are nominal before sanding, trimming and prefitting within industry standards. Specifications may be changed at manufacturer's option. Prefit and stock sizes available.

Blocking Reinforcement Options:
available at additional cost for undercutting and specialized hardware. Blocking recommended for Extra Heavy Duty Doors using surface mounted hardware.



WDMA PREMIUM GRADE EXTRA HEAVY DUTY DOOR

DOOR FEATURES:

Finish Type: Woodgrains, Solid Colors & Patterns

Laminate Face: Vertical grade - standard (VGS)

Vertical Edges: (visible surface) Same as face material laminated (-3) with edge-before-face construction. Optional edges are: unfinished (-1), finished at factory (-2), and painted at factory (-4) with a mill option hardwood edges for staining or painting.



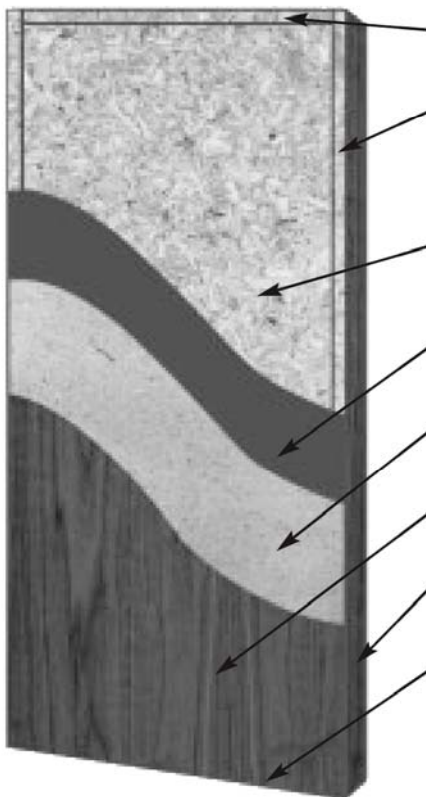
Cutouts: 3-5/16" minimum distance between lite and lock cutout and 5" minimum distance from door edge.

Standard Bevel: 1/8" in 2"

Clearances: 1/8" top, 1/8" lock and hinge stiles. See NFPA-80 1-11.4, 1999 edition, for bottom clearances.

DOOR STANDARDS:

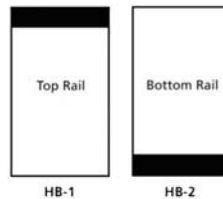
- ANSI/WDMA I.S. 1-A and AWI Section 1300 Quality Standards (Bonded Core).
- Top and bottom rails of door shall be factory sealed.
- Doors shall be clad in vertical grade standard high pressure decorative laminate, meeting or exceeding NEMA Standard LD3, Type VGS. Standard colors and patterns may be selected, or custom colors and patterns can be specified at additional cost.
- Neutral pressure 20-minute Intertek/Warnock Hersey fire labels shall be available within size and usage limitations. Fire-rated doors must use approved lite frames. Louvers are prohibited in 20-minute fire doors. Neutral pressure must be noted at time of bid.
- Positive pressure fire label is available on 20-minute single doors going into welded or knockdown steel frames. Surface-applied smoke gasketing, such as Pemko S88, must be applied to frame to achieve "S" rating (gasketing to be supplied by others). Listed & labeled steel lite frames must be used for lite openings. Positive pressure must be noted at time of bid.
- Cutouts for vision panels and louvers shall be made at the factory and shall be of sizes and locations as indicated on the drawings. Maximum length or width shall not exceed 16", nor will the maximum area exceed 256 square inches. Lead-lined steel lite frames shall be furnished for lite openings.
- Doors shall be individually poly-bagged for protection in transit and storage periods, and shall be marked as per tag openings on shop drawings.



- **TOP RAIL:**
3-3/8" Structural Composite Lumber (SCL)
- **VERTICAL STILES:**
1-3/8" Structural Composite Lumber (SCL) with matching hardwood edge
Crossbands concealed at edge
- **CORE:**
Particleboard, ANSI A208.1, grade 1-LD-2, 28-32#/cu. ft. with continuous lead glued to each side of framed core
- **LEAD SHEETS:**
1/16" to 1/4"
- **CROSSBANDS:**
High Density Fiber (HDF)
- **FACES:**
"A" grade wood veneer, unless otherwise specified
- **FINISHED THICKNESS:**
1-3/4" (± 1/16")
- **BOTTOM RAIL:**
3-3/8" Structural Composite Lumber (SCL)

All dimensions shown are nominal before sanding, trimming and prefitting within industry standards. Specifications may be changed at manufacturer's option. Prefit and stock sizes available.

Blocking Reinforcement Options:
available at additional cost for undercutting and specialized hardware. Blocking recommended for Extra Heavy Duty Doors using surface mounted hardware.



WDMA PREMIUM GRADE EXTRA HEAVY DUTY DOOR

DOOR FEATURES:

- Finish Type:** Permaguard™ WDMA TR-6 or OP-6 Factory Finish available
- Veneer Match:** Book match standard. Slip or random available if specified.
- Veneer Face Assembly:** Running match standard. Center or balanced available if specified.
- Pairs and Sets:** Pair match, set match available
- Doors/Transoms:** Door and transom match
- Vertical Edges:** (visible surface) Matching hardwood finished at factory (-2) with edge-before-face construction. Optional edges are: unfinished (-1) and stiles primed at factory (-9).
- Cutouts:** 3-5/16" minimum distance between lite and lock cutout and 5" minimum distance from door edge.
- Standard Bevel:** 1/8" in 2"
- Clearances:** 1/8" top, 1/8" lock and hinge stiles. See NFPA-80 1-11.4, 1999 edition, for bottom clearances.

DOOR STANDARDS:

- ANSI/WDMA I.S. 1-A and AWI Section 1300 Quality Standards (Bonded Core).
- Top and bottom rails of door shall be factory sealed.
- Doors shall be clad in WDMA premium "A" grade wood veneer with minimum thickness 1/42" before sanding. Both domestic and exotic hardwood species available for transparent finish. Mill option face material for opaque finish.
- Neutral pressure 20-minute Intertek/Warnock Hersey fire labels shall be available within size and usage limitations. Fire-rated doors must use approved lite frames. Louvers are prohibited in 20-minute fire doors. Neutral pressure must be noted at time of bid.
- Positive pressure fire label is available on 20-minute single doors going into welded or knockdown steel frames. Surface-applied smoke gasketing, such as Pemko S88, must be applied to frame to achieve "S" rating (gasketing to be supplied by others). Listed & labeled steel lite frames must be used for lite openings. Positive pressure must be noted at time of bid.
- Cutouts for vision panels and louvers shall be made at the factory and shall be of sizes and locations as indicated on the drawings. Maximum length or width shall not exceed 16", nor will the maximum area exceed 256 square inches. Lead-lined steel lite frames shall be furnished for lite openings.
- Doors shall be individually poly-bagged for protection in transit and storage periods, and shall be marked as per tag openings on shop drawings.